



Cut out each of these angles and stick them in the correct column of worksheet 1A to show whether they are **acute**, **obtuse**, **reflex** or **right angles**.



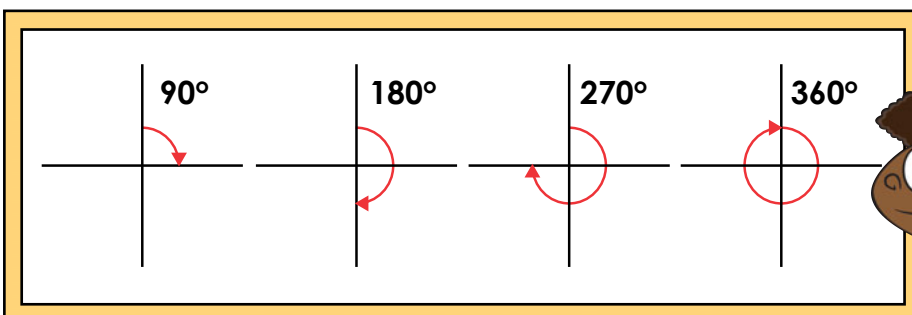
Cut out each of these angles and stick them in the correct column of worksheet 1A to show whether they are **acute**, **obtuse**, **reflex** or **right angles**.

Name: _____ Date: _____



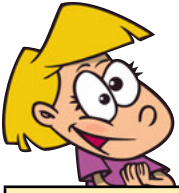
Cut out the Angle Cards and put them in the correct column to show if they are **acute**, **obtuse**, **reflex** or **right angles**. You can use the diagrams below to help you.

Acute angles	Right angles	Obtuse angles	Reflex angles
Smaller than 90°	90°	More than 90° but less than 180°	More than 180°



Now see if you can use a protractor to measure each of the angles above!

Name: _____ Date: _____



Draw four acute angles, four obtuse angles and four reflex angles in the boxes below. When you have finished, measure each angle with a protractor and record the measurement next to each angle.

Acute angles (smaller than 90°)

Blank area for drawing acute angles.

Obtuse angles (between 90° and 180°)

Blank area for drawing obtuse angles.

Reflex angles (larger than 180°)

Blank area for drawing reflex angles.

Name: _____ Date: _____



Can you draw an angle for each of the specifications below?
You will need to use a ruler and a protractor!

<p>Draw an acute angle and measure it:</p>	<p>Draw an obtuse angle and measure it:</p>	<p>Draw a reflex angle and measure it:</p>
<p>Draw an acute angle between 45° and 75°:</p>	<p>Draw a reflex angle between 200° and 220°:</p>	<p>Draw an obtuse angle between 105° and 115°:</p>
<p>Draw a reflex angle between 300° and 335°:</p>	<p>Draw an acute angle between 20° and 40°:</p>	<p>Draw an obtuse angle larger than 125°:</p>
<p>Draw an acute angle smaller than 45°:</p>	<p>Draw a reflex angle larger than 200°:</p>	<p>Draw an obtuse angle smaller than 100°:</p>

Name: _____ Date: _____

Have a look around and see how many different angles you can spot. Write examples for each type of angle in the correct box.



Acute angles
(less than 90°)

Obtuse angles
(between 90° and 180°)

Reflex angles
(more than 180°)

Right angles
(90°)